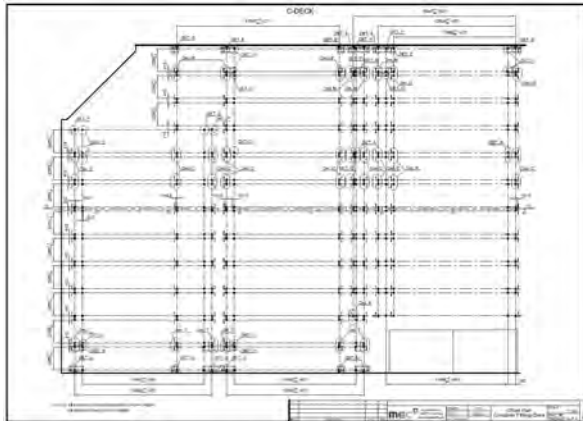


Offset Plan



- MEC provides offset plans for:
- Fixed fittings
 - in holds
 - on deck
 - Cell Guides

Offset plans are indicating the exact position of sockets, single and double lashing plates on either deck and guide fittings or welding cones in hold.

When receiving an order for fixed lashing equipment, MEC always prepares offset drawings if not otherwise specified. Offset drawings do not need to be approved by any classification societies.

